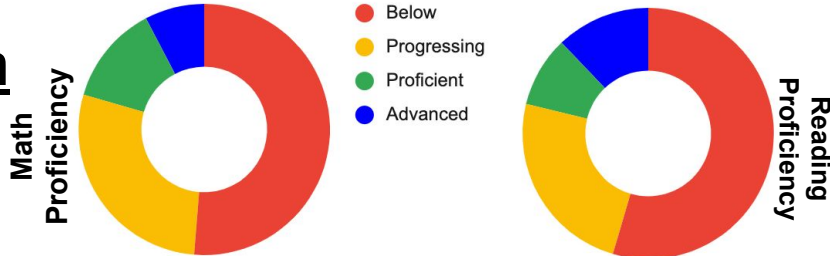


# Stakeholder Assessment Report

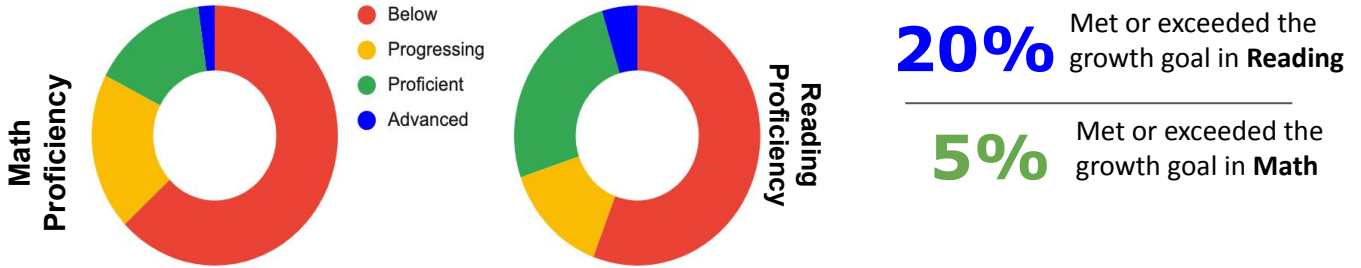
## NWEA MAP Growth Assessment

The NWEA MAP Growth Assessment assess students in Reading and Math. Students who score in the Proficient or Advanced categories will, statistically, meet or exceed the Nebraska State Assessment. This assessment also tracks student growth throughout the year. Third through eighth grade students are tested in the winter, kindergarten through second, ninth, and tenth grades are tested in the spring.

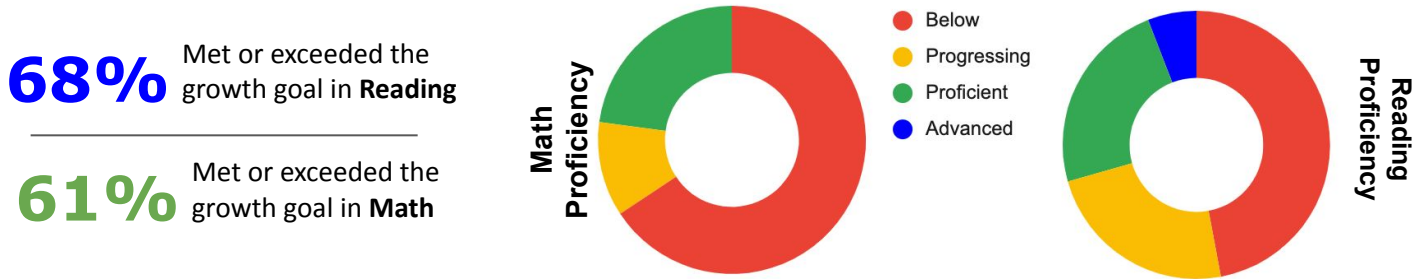
### Kindergarten



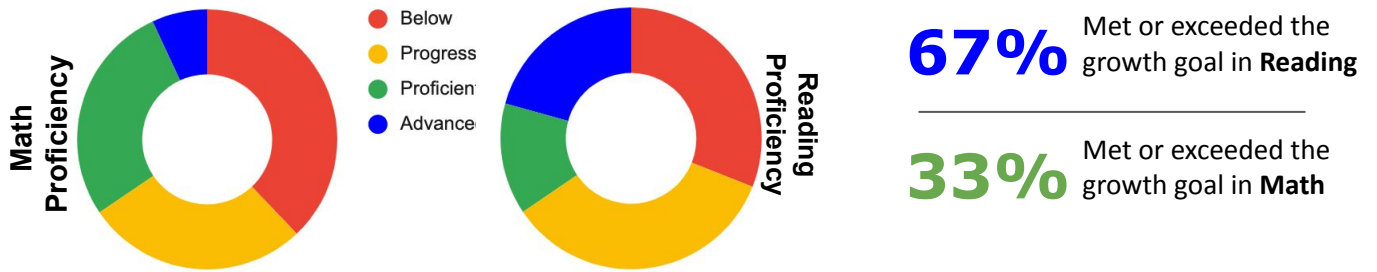
### 1st Grade



### 2nd Grade



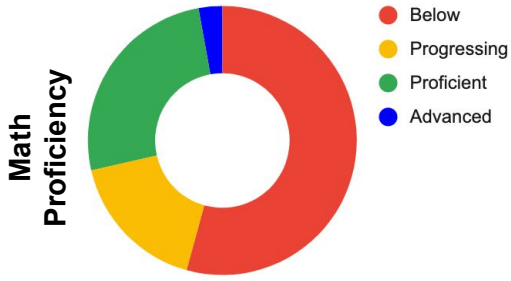
### 3rd Grade



### 4th Grade



5th Grade



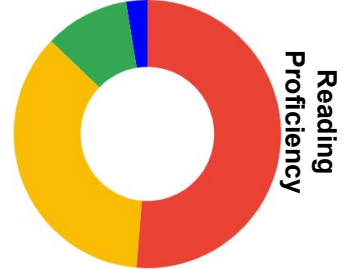
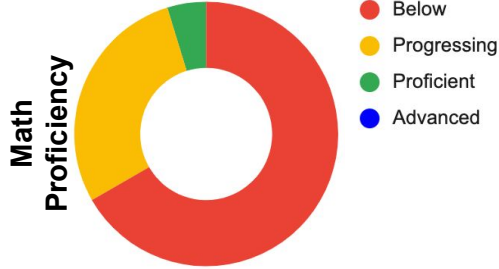
**43%** Met or exceeded the growth goal in Reading

**55%** Met or exceeded the growth goal in Math

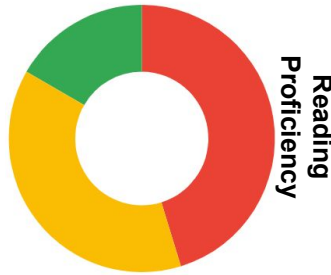
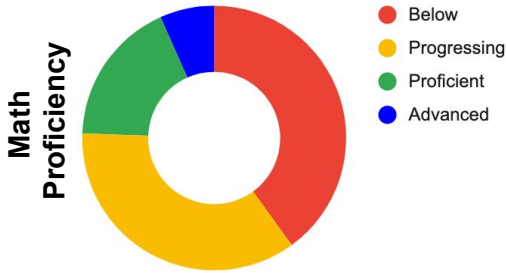
6th Grade

**61%** Met or exceeded the growth goal in Reading

**54%** Met or exceeded the growth goal in Math



7th Grade



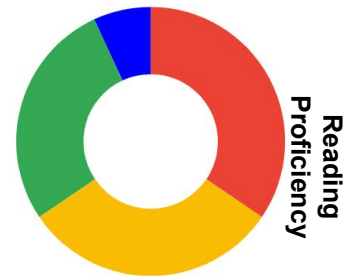
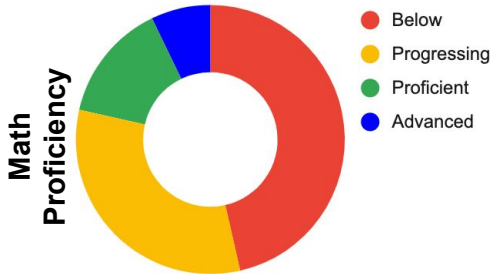
**44%** Met or exceeded the growth goal in Reading

**51%** Met or exceeded the growth goal in Math

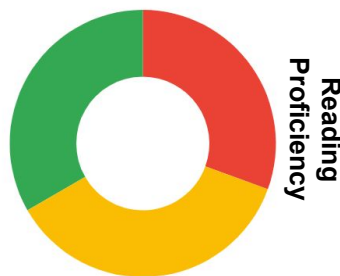
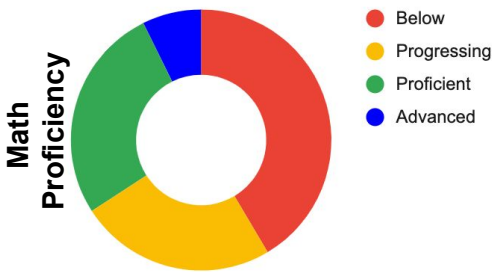
8th Grade

**63%** Met or exceeded the growth goal in Reading

**52%** Met or exceeded the growth goal in Math



9th Grade



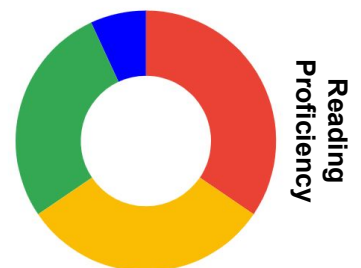
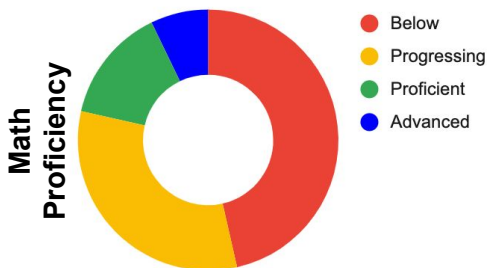
**55%** Met or exceeded the growth goal in Reading

**51%** Met or exceeded the growth goal in Math

10th Grade

**36%** Met or exceeded the growth goal in Reading

**52%** Met or exceeded the growth goal in Math

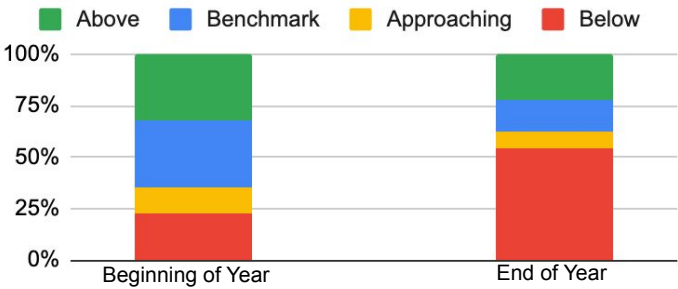


# Stakeholder Assessment Report

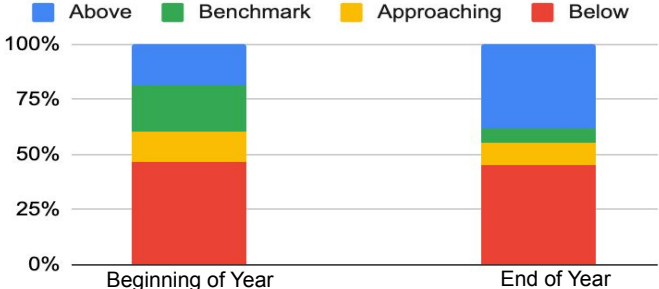
## Acadience Reading

The Acadience Reading screener assesses the building blocks of reading skills. In the earlier grades, word sounds, letters, reading rate and accuracy are measured. In the upper elementary grades, students are assessed on reading rate, accuracy, and comprehension. Scores are compared to a benchmark score. Scores below benchmark indicate a student might need extra instruction.

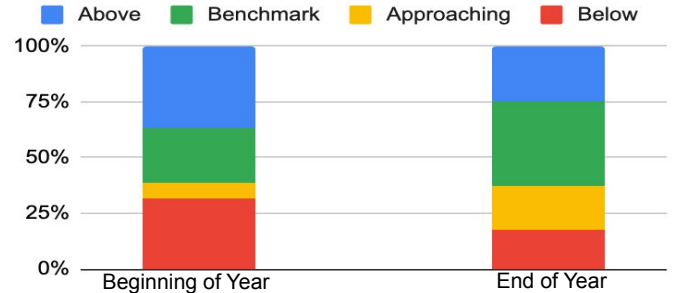
### Kindergarten



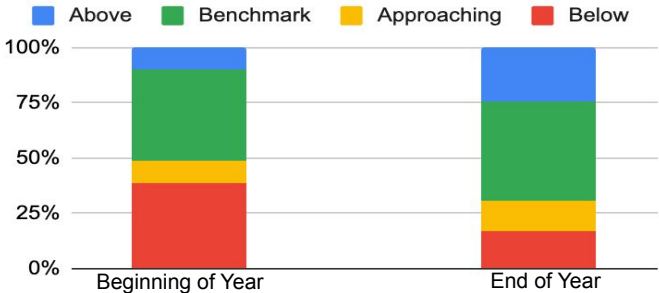
### 1st Grade



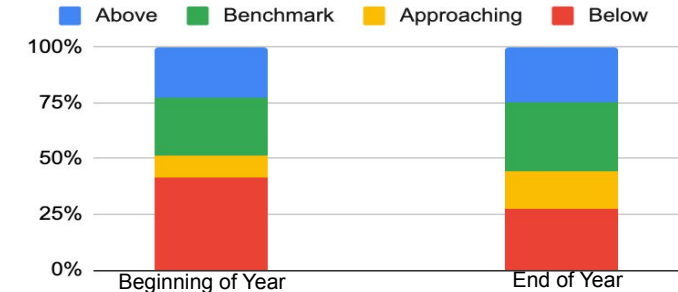
### 2nd Grade



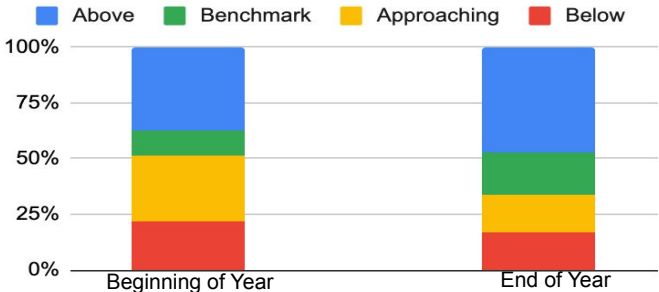
### 3rd Grade



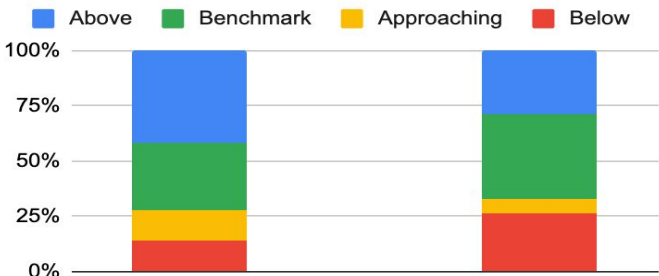
### 4th Grade



### 5th Grade



### 6th Grade



# Stakeholder Assessment Report

## iReady Benchmark

The iReady Benchmark assesses the grade-level performance of students as measured by the district math program. The Benchmark is given three times a year (Fall, Winter and Spring), and growth is shown as students progress through grade level achievement bands.

